

501[®] JEANS

WHEN LEVI STRAUSS GOT TOGETHER
WITH JACOB DAVIS IN 1872
TO REINFORCE A GARMENT FOR
HARD WORKING WESTERN PIONEERS.
THEY HAD NO IDEA THE IMPACT
ON MODERN CULTURE
THEIR PATENT WOULD MAKE.
IT'S MORE THAN THE ORIGINAL JEAN
& IT'S MORE THAN AN AMERICAN ICON.
IT HAS **BECOME A PART OF THE**
WORLD'S VISUAL LANDSCAPE.

513™ SLIM

IN 1961 A TWILL COLLECTION TITLED "SLIM FITS" CAME ABOUT AS AN ALTERNATIVE TO JEANS.

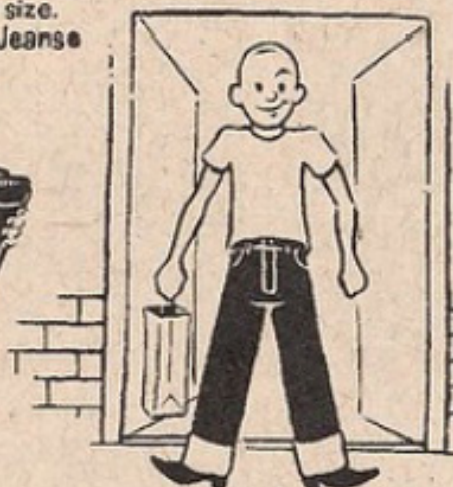
A CLEAN FIVE-POCKET PANT, IT CAME **ONLY** IN A LIGHT SAND COLOR AT **THE TIME**. BECAUSE THEY WEREN'T THE USUAL BLUE YOUNG CONSUMERS STARTED CALLING THEM "**WHITE LEVI'S.**" **CIRCA 1964,**

WE ADOPTED THE NAME & OFFERED THEM IN MORE COLORS. SLIM FITS ARE JUST AS RELEVANT TODAY AS THEY WERE THEN. WITH A SLIM FIT & LEG, THE 513™ SLIM IS OUR NEWEST STYLE. MODERN, TAILORED AND SURE TO BECOME YOUR NEW **FAVORITE.**



Make them your own

Step 1. Find your true size.
Shrink To Fit® 501 Jeans®



Step 2. Wear them out of the store.
(after you buy them)

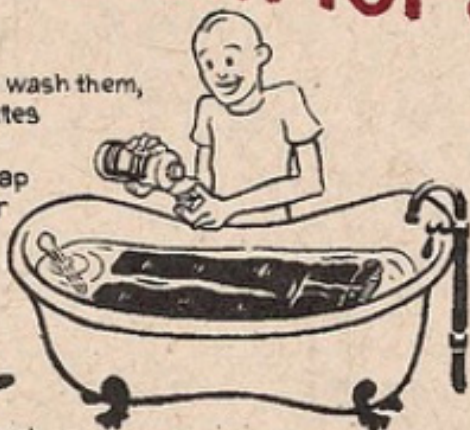


Step 3. Live in them as long as possible.

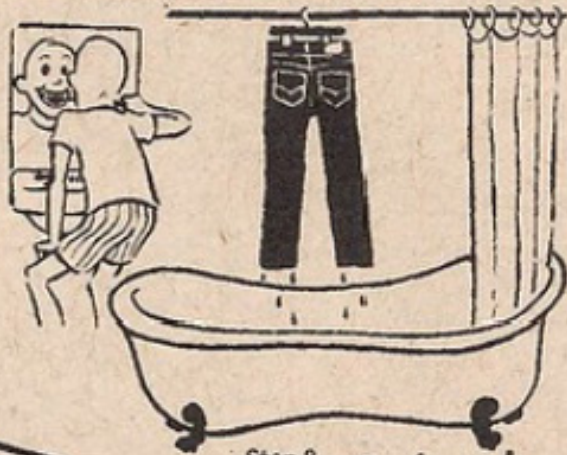


Wear them for at least a year

Step 4.
When you finally wash them,
soak for 20 minutes
with a capful of
Dr. Bronner's Soap
in cold water



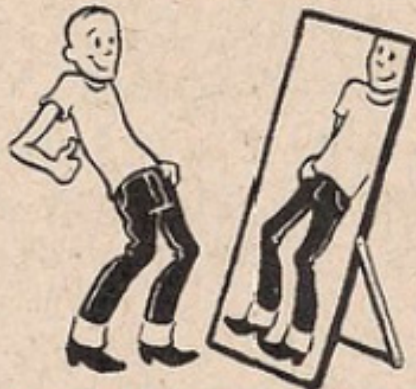
Step 5. Let them drip dry until they are slightly damp.



Step 6. Put them back on
(hopefully on a warm day or by
a nice fire.)



Step 7.
As they dry they'll
shape to your body.



Step 8.
Enjoy!



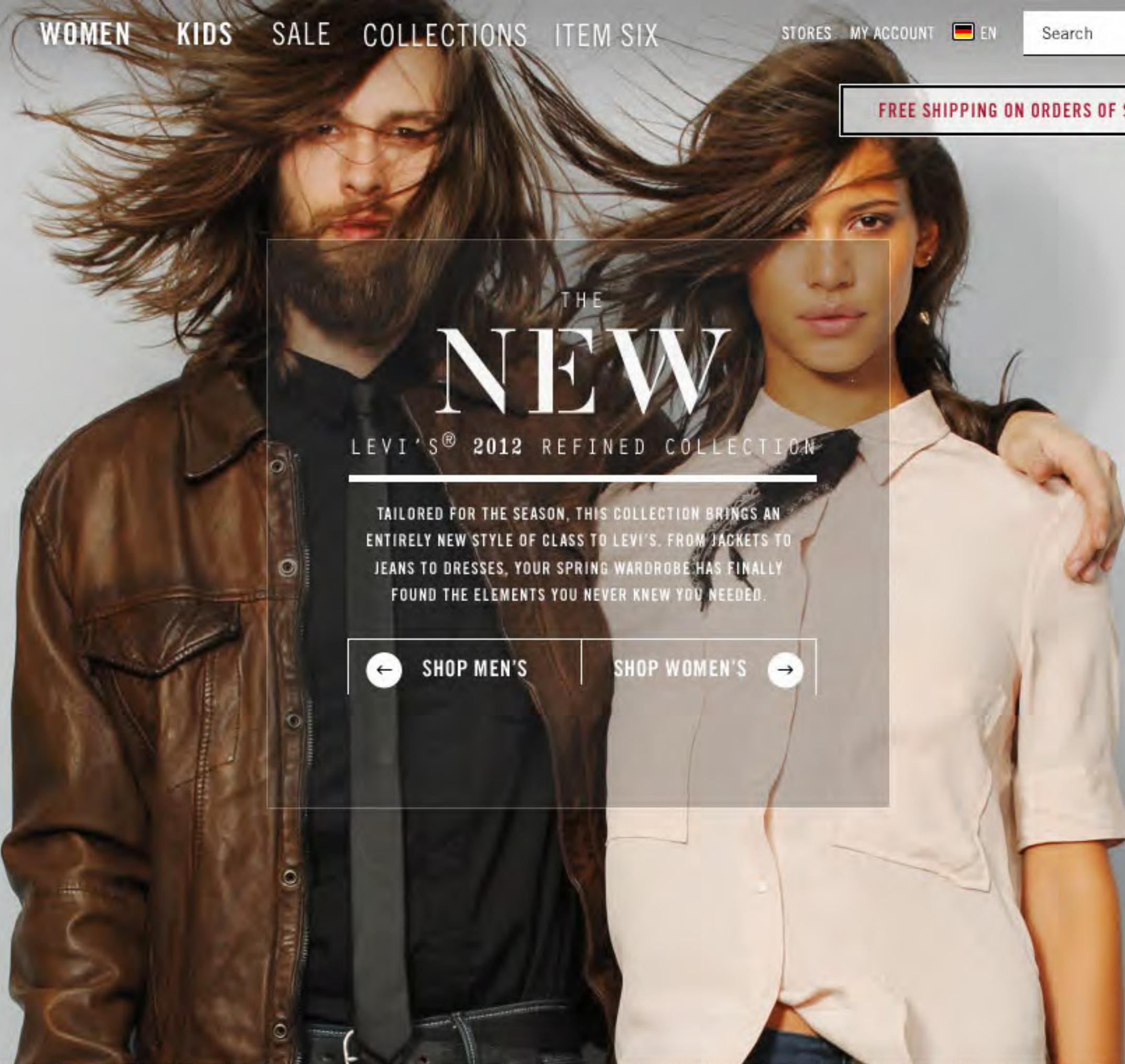
Wash them too soon they will shrink

Refer to packaging for traditional Shrink To Fit® sizing.



www.levi.com/501shrinktofit

FREE SHIPPING ON ORDERS OF \$100 OR MORE [LEARN MORE](#)



THE NEW

LEVI'S® 2012 REFINED COLLECTION

TAILORED FOR THE SEASON, THIS COLLECTION BRINGS AN ENTIRELY NEW STYLE OF CLASS TO LEVI'S. FROM JACKETS TO JEANS TO DRESSES, YOUR SPRING WARDROBE HAS FINALLY FOUND THE ELEMENTS YOU NEVER KNEW YOU NEEDED.

[← SHOP MEN'S](#)

[SHOP WOMEN'S →](#)



TAPER

508 TAPER & PERFORMANCE ARMY JACKET



COMMUTER

FORM. FUNCTION. CYCLING.

The first Levi's® collection for those who believe that life is better on two wheels.



1

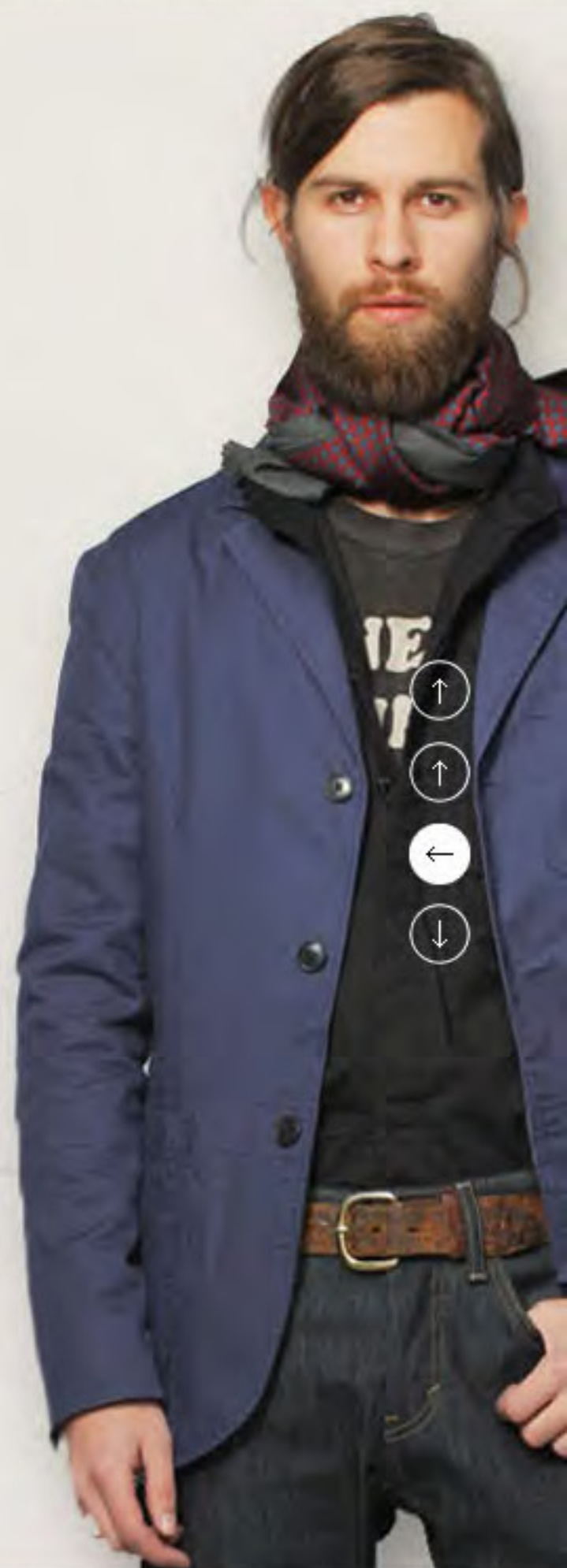
REFLECTIVE TAPE

3M Scotchlite lining give you high visibility at night

2

STRETCH FABRIC

Greater flexibility for when you're pumping those pedals.



GETTING WARMER

SPRING HAS AWAKENED, SO START BLOOMING WITH OUR LATEST COLLECTION OF LIGHT, COMFORTABLE DRESSES.



501®

ORIGINAL FIT JEANS

THE BLUE JEAN THAT STARTED IT ALL. A BESTSELLER FOR ITS ONE-OF-A-KIND FIT.

***** 10 REVIEWS

Model is 6'0" and wearing size 36W x 38L.



STYLE #394832939
STEELHEAD / GRAVEL HOUNDSTOOTH



WAIST	
28	29 30 31 32 33 34
	36 38
LENGTH	
	30 32 34 36
SIZE CHART	

\$138 x 1

ADD TO BAG

[RETURN POLICY](#)

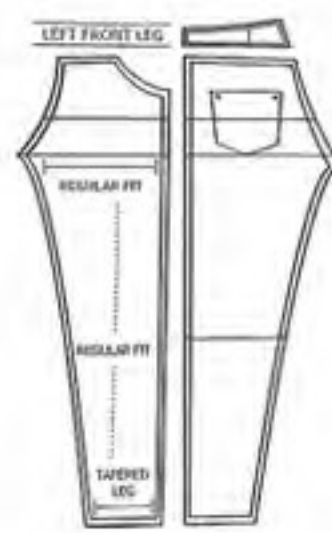
Like 3k Tweet 316 Pin it 5 Send to a friend

Levi's 520™ Taper Jeans were created for those who put an equal premium on comfort and style. As casual as they are classy, 520™s are made from a durable resin-coated denim, starting just below the waist with a slouched fit and tapering all the way down to a super-skinny opening at the ankle.



MATERIAL & FEATURES

Oversized front patch pockets with coin pocket and vertical button entry. Oversized back patch pockets wrap from the front. Double-needle stitching. Denim, 100% cotton, 11 oz. imported



HOW'S THE FIT AND SIZING?

Slouch taper fit. Sits low on hip (11 1/4" front rise). Tapered (13" leg opening). Measurements are based on a size 32W x 32L

[MEN'S JEANS FIT GUIDE](#)



GO WATER<LESS

We're committed to doing our part to tackle the global water crisis. That's why 520™ Taper Jeans are made with up to 96% less water using our Water<Less finishing process.



CARING FOR DENIM

Your 520™s are happiest washed inside out in cold water to preserve the color. And never, ever put them in the dryer or you're just begging them to fade.



WHAT IT ALL MEANS

You don't put time into wearing a pair of jeans just for them to split when they finally break in. "Double-needle stitching" is a stronger stitch, keeping your Levi's® together longer.



WEARING IT

We suggest you wear your 520™s rolled at the cuff with a classic pair of wingtips or oxfords, or tucked into your favorite pair of worn-in boots.



PUT IT TOGETHER

520™ Taper Jeans are the perfect companion for this slim fit, contemporary version of our Trucker Jacket. It features the spread collar and vertical-seam construction of the original, plus two button-flap chest pockets, two welt pockets, and side tabs that adjust the fit.

Layer it all over our super soft premium tee, the classic base layer with short sleeves, a crew neck, and one patch pocket at the chest.



TRUCKER JACKET



PREMIUM POCKET TEE



DERBY SHOE

YOU MIGHT ALSO LIKE



SEA RANCH DRESS



8 POCKET BLAZER



DRILL SHORTS



ONE POCKET SHIRT

L.S. & CP
1938

PROPER SHIRT

TAKE THE ROUNDED POCKET
OF A '30s DRESS SHIRT, GIVE IT THE STRENGTH
OF '50s WORKWEAR AND A CLEAN, MODERN COLLAR,
AND YOU'VE GOT THE PROPER, CLASSIC ELEMENTS
COMBINED FOR A REFINED NEW LOOK.

3v. 66

ONE POCKET SHIRT

SOMETIMES A CLASSIC SHIRT LOOKS JUST RIGHT.
WE'VE ADDED DETAILS TO AMPLIFY THE APPEAL OF
OUR ORIGINAL ONE POCKET. FEATURING TRIPLE NEEDLE
STITCHING AND A LIVED-IN GARMENT WASH,
IT'S A CLASSIC GONE RUGGED.

6v. 48



LEVI'S® NEWBURY

PRESENTS

LEVI'S®
VINTAGE CLOTHING

COME SEE WHAT REPRESENTS THE HEART
AND SOUL OF THE AMERICAN WORKER AND
THE DEDICATION IT TOOK TO CAPTURE
THE AUTHENTICITY OF THE ORIGINAL JEAN

5-7PM THURSDAY, NOVEMBER 3RD

131 NEWBURY STREET, BOSTON

617.262.0135



HIGH RISE
 BY THE MID-1960s, EVERYONE WAS WEARING HIGH RISE JEANS, AND **LEVI'S** LED THE WAY WITH OUR SUPER SLIM 606-THEY NARROWED THE WAIST AND MADE LEGS LOOK A MILE LONG. OUR UPDATED TAKE ON THAT ICONIC SILHOUETTE IS SLEEKER AND SEXIER THAN EVER-THE PERFECT BLEND OF CLASSIC AND MODERN.



HIGH RISE SKINNY



FITTED THROUGH THE WAIST, SEAT & THIGH SKINNY THROUGH LEG WITH SLIGHT TAPER TO THE ANKLE

508TM TAPER

WHEN **Levi's** PUT RIVETS IN PANTS
BACK IN THE **1870s**, WE BEGAN
A TRADITION OF INNOVATION AND CHANGE.
TODAY WE BRING YOU THE **508**,
SPECIALLY TAILORED TO BE
WORN LOW ON THE WAIST.
WITH A **SLOUCHED** FIT
AND A SLIM TAPERED LEG,
THEY'RE A WHOLE NEW LOOK
FROM THE **COMPANY**
THAT INVENTED JEANS.

520TM TAPER

IN 1964, **Levi's** INTRODUCED
A **NEW LOOK IN DENIM,**
THE SUPER SLIM 351. THE LOT NO. WAS
CHANGED TO 606 TWO YEARS LATER.

SAY HELLO **TO THE NEXT**
GENERATION: THE 520TM
WITH AN **EXTENDED** RISE
AND A SLIM TAILORED **LEG,**
IT'S A SHARP MODERN ANSWER
TO THE **21ST** CENTURY.

514™

BEDFORD CORD

THE BEDFORD CORD FIRST APPEARED
AS A PART OF OUR **BILTMORE** LINE
IN THE **1930^S** AS RIDING PANTS.
IT RESURFACED IN **1961**
AS A SLIM FITTING,
5 POCKET STYLE
WE CALL "**CALIFORNIANS.**"
TODAY WE OFFER THE **ICONIC**
BEDFORD CORD FINISH IN A MODERN **514**™ FIT.

FLARE **THE FLARE WAS BORN IN 1969**

AS PART OF THE [®]LEVI'S _{FOR} GALS LINE. THE STYLE EVOLVED IN THE '70^S AND LEG SHAPES OPENED UP DRAMATICALLY TO WHAT WAS THEN CALLED "ELEPHANT BELLS." WITH THE FLARE TREND EMERGING AGAIN, WE'RE RE-INTRODUCING THE SILHOUETTE IN A MODERN WAY. AS THE ULTIMATE LOOK FOR DRESSING UP OR DOWN, IT'S THE PERFECT JEAN _{FOR} OUR TIMES.

DROP TAPER CHINO

WE FIRST STARTED MAKING CHINOS IN THE 1980^S,
BACK WHEN KHAKIS RULED THE WORLD.
OUR DROP TAPER CHINO ADHERES TO THE CLASSIC CHINO STYLING
AND ICONIC FIVE-POCKET DETAILS OF THOSE DAYS,
BUT THAT'S WHERE ANY SIMILARITY ENDS.
PLEATED AT THE WAIST,
TAPERED AT THE LEG,
AND WITH A COOL DROP CROTCH,
THESE ARE **DEFINITELY NOT**
YOUR DAD'S CHINOS.